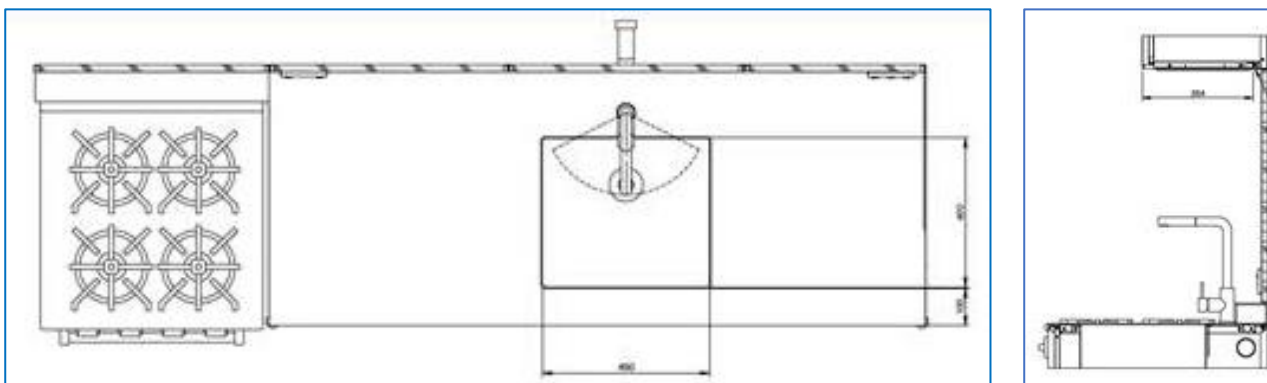


# Choosing a Kitchen Tap

The tap and sink will be some of the most used items in your KXN® Kitchen, so it's worth spending some time to get it right.

We need to confirm the make and model of your Tap before we start modelling so we can ensure the cut-out dimension is precise and the tap is located in a suitable place.



## Things to consider when choosing a tap:

### – Durability

*As one of the most used items in your Kitchen you will need a tap that is good quality and durable.*

*Many are poor quality and parts are prone to breaking or leaking, so be wary of less expensive options when doing your research.*

### – Position

*Will the depth of the tap sufficiently reach over the sink? You don't want water landing too close to the side of the sink.*

*Does it reach both sinks if you have a double sink?*

*Some taps have a handle separate to the tap – how far apart do you want these to be?*

*Is there an air switch on the bench top, where will this be in relation to the taps?*

### – Height of tap vs depth of sink

*The further away from the sink the tap is, the more it will splash.*

### – Finish

*Do you want the finish to match other components in your Kitchen?*

*If you have a bench top air switch you may want these to match.*

*Is the finish easy to clean as a tap is a high touch item?*

### – Swivel vs Pull Out Spray

*We highly recommend pull out sprays as they make cleaning the sink easier, especially in large sinks and are great for washing dishes and produce.*

# Tap Recommendations

## Option # 1

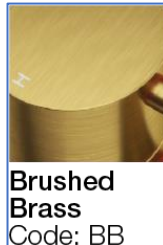
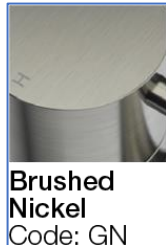
### Kitchen Mixer with Pull Out Spray

Progetto Buddy

Code # CB044



### Finishes



**\$849 inc GST**

**\$1099 inc GST**

**\$1099 inc GST**

**\$1099 inc GST**

**\$1099 inc GST**

*Some Tap finishes may not be available within desired timeframe. We will confirm availability at time of order.*

### Details

Height - 325mm

Tube Diameter - 28mm

Origin - Italy

Material - Brass

Warranty - 15 Years

Bench Hole Size - 35mm

**MADE HERE.**

**IMO**

# Tap Recommendations

## Option # 2

### Kitchen Mixer with Pull Out Spray

Progetto Oli 316

Code # OL044



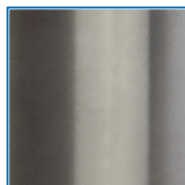
### Finishes



Brushed  
S/Steel  
Code: BS



Brushed  
Brass PVD  
Code: BBP



Brushed  
Gunmetal  
PVD  
Code: GMP

\$1199 inc GST

\$1499 inc GST

\$1499 inc GST

*Some Tap finishes may not be available within desired timeframe. We will confirm availability at time of order.*

### Details

Height - 304mm

Tube Diameter - 28mm

Origin - Italy

Material - 316 Stainless Steel

Warranty - 20 Years

Bench Hole Size - 35mm

**MADE HERE.**

**IMO**

# Tap Recommendations

## Option # 3

### Kitchen Mixer with Double Swivel Spout

Vola KV1 by Arne Jacobsen

Code # KV1



### Finishes



16

Polished Chrome



40

Brushed  
Stainless Steel



20

Brushed Chrome



19

Natural Brass

From \$2700 inc GST

*Other colours available on request – refer [metrix.co.nz](http://metrix.co.nz) . Some Tap finishes may not be available within desired timeframe. We will confirm availability at time of order.*

### Details

Height - 235mm

Tube Diameter - 10mm

Origin - Denmark

Material - 316 Stainless Steel

Warranty - 5 Years

Bench Hole Size - 32mm

**MADE HERE.**

**IMO**